



**Carbon  
Positive  
Australia**

**2021 MID-YEAR REVIEW**  
Our Work, Your Impact



# Your Footprint. Australia's Trees. Our Future.

MESSAGE FROM OUR CEO  
PROGRESS TIMELINE  
CARBONCARE™  
CARBON CALCULATOR  
CELEBRATING 20 YEARS  
PROJECT MONITORING  
2021 PLANTING

The 2021 planting season is almost upon us, and we are off to a great start with a good amount of early rainfall. However, it's been a tough few months over here on the West Coast, beginning with a large-scale bush fire just outside the Perth Metropolitan area and Cyclone Seroja that devastated Kalbarri, 6 hours north of Perth. We are happy to report that these events did not impact our projects; however, many individuals have lost homes and livelihoods, and we extend our thoughts to them and their families. These events also affected our native wildlife, making our mission to restore biodiverse habitats through restoration even more urgent.

This year we will continue our planting at Eurardy Reserve, WA, and have three other direct planting projects across the Wheatbelt and Great Southern that will be planted over the winter and coming months that you can support. Our site at Nimbin, NSW, will begin with assisted natural regeneration with planting to start in 2022. As a bonus, we are also supporting two further community projects with trees over the winter; Activate the Wheatbelt in Narrogin with 40,000 trees, and the Tjuntjuntjara community in the Great Victoria Desert with 2,000 trees.

Since we last wrote to you in the Spring, a lot has been happening in the Carbon Positive Australia world.

In February, we marked our 20th Anniversary with a celebration in Fremantle, where we got to hear from experts from the fields of carbon, ecology, and restoration. Our members were treated to an evening of engaging talks, catching up with old friends, and some great music by Reuben D'Melo. We have also released two industry reports as part of our broader CarbonCare™ initiative, supported by Lotterywest, and delivered a 90-minute teleseminar with guest speakers discussing the comprehensive research and report recommendations.

Lastly, we are delighted to announce that our new Carbon Footprint Calculator will be released on 31st May. We want 1 Million Australians to have calculated their carbon footprint by this time next year, and we hope you will take part in the challenge and encourage your friends, family, and colleagues to join you.

I hope you enjoy seeing the amazing progress and growth of the trees you have funded and planted last year. Thank you to all of our supporters, those who have been on this journey for many years, and those who have recently joined us. Together we can plant for Australia and the world's future.



Louise Tarrier  
Chief Executive Officer

# MESSAGE FROM OUR CEO

2020

October

November

December

CarbonCare WA Broadacre Landholder Surveys conducted  
Board & team Strategy Day  
Site plans: Nimbin, Eurardy and Brookton  
Finalise seed orders

Eurardy monitoring  
Seed collection at sites  
Site planning Tootanellup  
Online Carbon Calculator: user testing

Carbon Market Institute Virtual Summit  
Site planning Gabbin  
Seeds to nursery for propagation  
EnviroFest stall  
I.S.W.A fair  
Calendar photography competition

2021

January

February

March

April

May

June

July

CarbonCare stakeholder interviews  
Began ERF registration of 2021 projects

AGM and new name launch  
Finalise Co-Benefit Report

Attended Carbon Regional Forum

ABC news segment and article  
Brookton monitoring (saltland & biodiverse)  
Official release of CarbonCare voices & CoBenefits reports  
Check seedlings and finalise seed order

CarbonCare Teleseminar event  
Final user testing for online Carbon Calculator: ready for launch  
Site works at Eurardy: ready for planting

Lines to be ripped at Gabbin ready for planting  
Household Carbon Calculator to go live  
Activate The Wheatbelt community planting event (CPA donated 40,000 trees)  
Planting at Eurardy

Planting at Gabbin  
Monitoring and infill planting at Bencubbin  
New and infill planting at Brookton  
Planting at Tootanellup



In 2020 we began CarbonCare™, a five-year research project supported by Lotterywest, which seeks to boost community understanding of carbon farming.

The first phase of the project, CarbonCare Voices, surveyed more than 300 carbon market stakeholders, including carbon project owners, broadacre landholders, and potential carbon offset buyers. The output of this study, a detailed, peer-reviewed report, was released in May 2021 and is available on our website.

The research study provides a snapshot of the current state of the Western Australian carbon market and its development through the lens of market participants; it includes insights from twelve agriculture industry stakeholders.

Eight recommendations came out of the report, and we will be working with the landcare sector, landholders, and other stakeholders to begin implementing these recommendations over the coming years.

You can read the report and case studies on our [website](#).







We know that when we plant native trees and shrubs to store carbon, we achieve other results such as increased biodiversity, improvements to water and soil quality, local employment, and social benefits. Therefore, the need for a focus on native restoration in the Western Australian Wheatbelt is imperative with over 90% of the Northern Wheatbelt cleared for agricultural planting since the 1920s, resulting in widespread biodiversity loss and rising salinity.

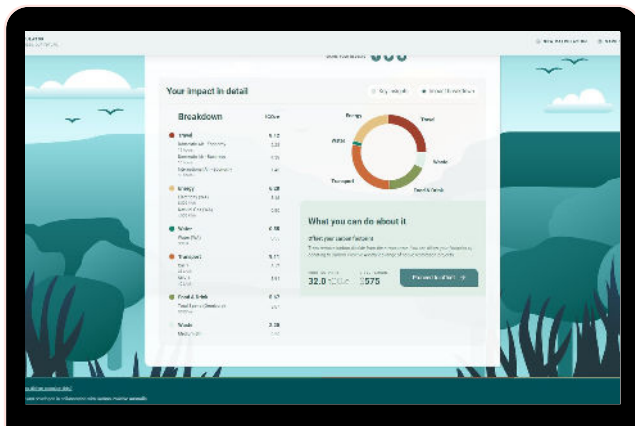
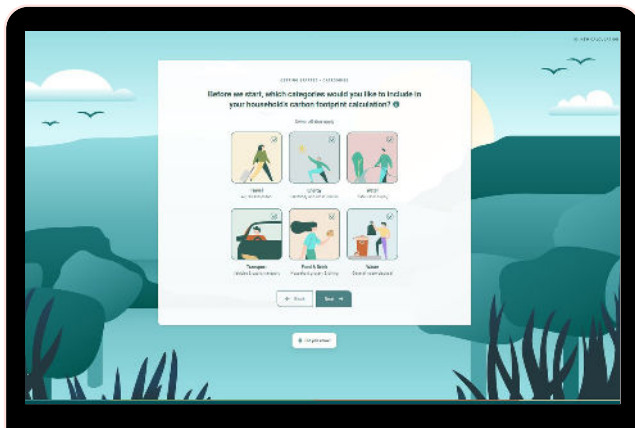
As a part of the CarbonCare project, we wanted to be able to demonstrate the financial value of these benefits to stakeholders and investors in carbon projects. The CarbonCare™ Co-benefits report, undertaken by Point Advisory, undertook a case study of the site at Hill View. Carbon Positive Australia has previously planted and conducted baseline biodiversity surveys with government grant funding at this site.

The Hill View site is part of a much larger initiative, the Yarra Yarra Biodiversity Corridor (YYBC). This project is registered with the International Gold Standard Foundation, a Carbon Neutral Pty Ltd project.

The study was able to extrapolate a financial value over and above a carbon price for both the planting site at Hillview and the wider Yarra Yarra Biodiversity Corridor.

This was the first time in Western Australia that such a study had been undertaken. We hope that both the values and the broader recommendations will be of value to stakeholders, encourage future biodiverse restoration and planting projects, and promote further study communication benefits.

The full report is available on our [website](#).



Over the last year, we have been upgrading our Carbon Calculators and developing a new online experience. As a result, we are delighted to announce we will be launching our new online Carbon Footprint Calculator for households on the 31st May 2021, enabling individuals and small businesses to calculate their carbon emissions with ease.

With support from Lotterywest, we have been working with Anthologie, a Perth-based creative agency, to build and design a robust online calculator with a fantastic user experience which includes:

- A user-friendly interface for desktop and mobile platform
- Tooltips to guide and assist the user throughout the process
- Randomised “Did You Know?” facts
- Transparent reference and explanations on how emissions were calculated
- Tailored insights into the users carbon footprint including ways to reduce and offset emissions
- The ability for users to share their results and compare their carbon footprint over time

We have also developed Excel-based calculators for events and business. The Excel calculators are currently being trialed by around 50 businesses, who are working towards becoming carbon positive. We look forward to rolling them out.

A years' worth of research and development has gone into providing these amazing tools and we hope they will empower Australians to understand and reduce their carbon footprint, and help restore Australia's landscape through our reforestation offsets.



2021 is our 20th anniversary. To mark this milestone, we celebrated with many of our planting partners and members at our annual AGM in February. Collaboration is one of our organisational goals; this event brought together specialists in carbon, ecology, and conservation with landholders, individuals, and local businesses, all united in our commitment to get Australia's environment back on track.

The theme for the night was the benefits of land restoration, which was explored both economically and ecologically by our expert guest speakers: Kevin Fitzgerald, Dr. Kingsley Dixon (Curtin University), Dr. Nick Dunlop (Conservation Council of Western Australia), and Luke Sweet (Clean State WA). We were pleased to see partners, landholders, and friends and colleagues of Carbon Positive Australia both old and new at this event. We also presented our financial report for the year ended September 2020 which you can find [here](#).

If you would like to become a member then you can find out more by emailing: [community@carbonpositiveaustralia.org.au](mailto:community@carbonpositiveaustralia.org.au)

Back in October (the beginning of our financial year) we launched our new name and website, [www.carbonpositiveaustralia.org.au](http://www.carbonpositiveaustralia.org.au). This was part of our strategic plan to address our organisational goals. As some of our donors may have experienced, we have been working on internal systems and processes to improve information flows. We hope this will result in more transparency and better project information for you, our donors, and many more educational resources that the community can access. Ultimately, our goal is to build a fantastic resource library focusing on the carbon cycle, biodiversity, and land restoration.

*Our goals haven't changed we want to continue to **empower** our community, **encourage** everyone to understand their carbon footprint, **collaborate** with partners, and **restore** our precious land.*



## EURARDY RESERVE, WA NANDA COUNTRY

- **Region:** Northern Country, WA
- **Planted:** 2019, 2020
- **Future Planting:** 2021-2023
- **Size:** 1,350 hectares
- **Seedling Count:** 221,834 (hand-planted)
- **Land Owner:** Bush Heritage Australia
- **Planting Partner:** E-Scapes Environmental

### MONITORING SUMMARY

Twelve permanent monitoring plots have been established across the Eurardy site, each covering a total area of 0.22 ha. Monitoring is being conducted by Tina Parkhurst from Bush Heritage Australia. Monitoring is conducted every 6 months, with the most recent monitoring undertaken in November 2020.

- The most recent monitoring results show extremely high seedling establishment and survival of 97%.
- The average stems per ha for all species in the 2019 planting was 417, and 597 stems per ha for the 2020 site.
- In total, *Acacias* averaged 225 stems per ha on the 2019 planting site and 181 stems per ha on the 2020 site.
- *Eucalypts* were recorded at 156 stems per ha on the 2019 planting site and 178 stems per hectare on the 2020 site.
- *Melaleucas* were also at much higher densities on the 2020 site compared to the 2019 site, with 228 stems per hectare compared to 32 stems per hectare, respectively. However, it is expected that the 2020 site stem density will reduce due to the mortality of seedlings over the summer months.
- Despite rainfall in 2020 being below the long-term average (229 mm compared to 285 mm), late November rains provided excellent conditions for ongoing seedling establishment and survival throughout the summer months.

## EURARDY RESERVE, WA NANDA COUNTRY

- **Region:** Northern Country, WA
- **Planted:** 2019, 2020
- **Future Planting:** 2021-2023
- **Size:** 1,350 hectares
- **Seedling Count:** 221,834 (hand-planted)
- **Land Owner:** Bush Heritage Australia
- **Planting Partner:** E-Scapes Environmental



INITIAL PLANTING AT EURARDY



2 YEARS LATER

### WHATS NEXT?

A further 277 hectares is scheduled to be planted at Eurardy during winter 2021. Site preparation will begin prior to the first winter rains to ensure moisture capture. Herbicide will continue to be applied prior to planting to allow sufficient build-up of organic material for site stability, while also reducing moisture competition for seedlings. Approximately 158,000 seedlings will be planted across this area.

BROOKTON, WA  
BALARDONG NOONGAR COUNTRY

- **Region:** Wheatbelt, WA
- **Planted:** 2019, 2020
- **Size:** 53 hectares
- **Seedling Count:** 58,392
- **Partner:** FarmWoods & Sandalwood Solutions

### MONITORING SUMMARY

In April, Carbon Positive Australia team members Jess and Alice joined Dr. Peter Ritson on-site at Brookton to monitor the progress of seedlings planted in 2019 and 2020.

The team monitored more than 30 plots across the planted area (approx. 500m<sup>2</sup> each), noting tree height, stem width, species and survival.

Overall, survival rates varied across the sites, largely dependent on salinity and wind erosion. In the highly saline areas, the *Atriplex semibaccata* seemed to show the most successful growth rates. The tallest tree measured in the biodiverse area was an *Acacia acuminata* (Jam) at 2.5 metres.

Germination of sandalwood seed (*Santalum spicatum*) planted in 2020 was patchy, so the local Noongar Budjar Rangers were engaged to conduct infill planting across the Biodiverse Sandalwood areas. In the original planting, two seeds were planted per hole next to every second host tree. This time, a new approach was taken, whereby one seed was planted on either side of every second host. We look forward to seeing if this technique change has an impact on germination success.

BROOKTON, WA  
BALARDONG NOONGAR COUNTRY

- **Region:** Wheatbelt, WA
- **Planted:** 2019, 2020
- **Size:** 53 hectares
- **Seedling Count:** 58,392
- **Partner:** FarmWoods & Sandalwood Solutions



BEFORE PLANTING AT BROOKTON



TWO PLANTING SEASONS LATER

**WHATS NEXT?**

Official monitoring results and analysis are expected in the coming weeks. A further 8 hectares has been mounded in preparation for planting this winter. We will also be undertaking some further infill planting of the 2020 Saltland Carbon planting areas.

CRANBROOK, WA  
MINANG NOONGAR COUNTRY

- **Region:** Great Southern, WA
- **Planted:** 2020
- **Size:** 65 hectares
- **Seedling Count:** 35,489 (hand-planted) + direct seeding
- **Supported By:** National Landcare  
**Program:** Smart Farms Small Grants
- **Partner:** Threshold Environmental

## MONITORING SUMMARY

Planting took place over July 2020 with a total of 85 local native species. A mix of seed and seedlings were used, with the Biodiverse areas primarily sown with direct seeds, and the Saltland area with seedlings.

The Saltland Carbon site was mounded with rows approximately 2 metres apart and seedlings were planted in a grid (with *Eucalyptus* and *Melaleuca* trees on a 4 x 4 metre spacing from each other) to distribute each species as evenly as possible across the site.

The Biodiverse Carbon and Biodiverse Sandalwood sites were scalped with rows 1.4 metres apart.

The Threshold Environmental team undertook monitoring at the Cranbrook site in April 2021 from which favourable results have been indicated including the excellent establishment of sandalwood hosts (mixed *Acacia* species).



## CRANBROOK, WA MINANG NOONGAR COUNTRY

- **Region:** Great Southern, WA
- **Planted:** 2020
- **Size:** 65 hectares
- **Seedling Count:** 35,489 (hand-planted) + direct seeding
- **Supported By:** National Landcare  
**Program:** Smart Farms Small Grants
- **Partner:** Threshold Environmental



BEFORE PLANTING CRANBROOK



JUST ONE PLANTING SEASON LATER

### WHATS NEXT?

Once the host species planted in the Biodiverse Sandalwood area are sufficiently established, planting of the sandalwood nuts will be organised for winter 2022. We will visit the site over the coming months and years to measure and monitor progress

BORDEN, WA  
KORENG NOONGAR COUNTRY

- **Region:** Great Southern, WA
- **Planted:** 2020
- **Size:** 10 hectares
- **Seedling Count:** 23,288 (hand-planted)
- **Supported By:** National Landcare Program: Smart Farms Small Grants
- **Partner:** Threshold Environmental

## MONITORING SUMMARY

In July 2020, a selection of 14 salt-tolerant native species were planted at Borden including several *Melaleucas*, *Acacias*, and *Eucalypts*. The site was mounded to approximately 2.0 metres apart and the 23,288 seedlings were planted in a grid to distribute each species as evenly as possible across the site.

The Threshold Environmental team undertook monitoring at the Borden site in April 2021 from which favourable results have been indicated.

This site is being monitored and research is being undertaken with regards to salinity mitigation. We are looking forward to the first set of outcomes which will be reported in the winter of 2021.

This research has been funded by the National Landcare Program Smart Farms Grant.



BORDEN, WA  
KORENG NOONGAR COUNTRY

- **Region:** Great Southern, WA
- **Planted:** 2020
- **Size:** 10 hectares
- **Seedling Count:** 23,288 (hand-planted)
- **Supported By:** National Landcare
- **Program:** Smart Farms Small Grants
- **Partner:** Threshold Environmental



BEFORE PLANTING BORDEN



JUST ONE PLANTING SEASON LATER

**WHATS NEXT?**

A full analysis of the April monitoring results are expected in the coming weeks. This will include survival and growth rates, and recommendations for further site treatment and potential infill planting. We will visit the site over the coming months and years to measure and monitor progress

**NIMBIN, NSW**

**Traditional Owners:** Widjabul

**Region:** Northern Rivers, NSW

**Size:** 29 hectares

This ecological restoration site will provide a corridor between two national parks. The site will increase habitat for endangered species, including koalas. We will increase stocking in the dry rainforest area, this will encourage natural regeneration and biodiversity.

Due to adverse weather conditions, we will begin with natural regeneration in 2021 with planting now planned for 2022

**TOOTANELLUP, WA**

**Traditional Owners:** Minang Noongar

**Region:** Great Southern, WA

**Size:** 25 hectares

The property represents a strategic link between the Tootanellup Nature Reserve and a Water and Rivers Commission Reserve. We will be caring for this site by planting a biodiverse seed mix containing more than 22 native species including *Acacia*, *Bossiaea*, *Banksia* and *Eucalypt* species. The site will host more than 30,000 new trees and shrubs this winter.

**EURARDY, WA**

**Traditional Owners:** Nanda

**Region:** Northern Country, WA

**Size:** Additional 277 hectares

Eurardy protects more than 500 plant species, including five nationally endangered or vulnerable species. The reserve also forms a crucial ecological linkage between the Kalbarri National Park to the west, and the Toolong Nature Reserve to the northeast. We currently have 157,950 stems in the nursery ready for planting in June.

**BROOKTON, WA**

**Traditional Owners:** Balardong Noongar

**Region:** Wheatbelt, WA

**Size:** Additional 8 hectares

Brookton is a working farm where we are restoring degraded land, including salt-impacted areas. In July 2021, we will be planting 15,500 seedlings.

**GABBIN, WA**

**Traditional Owners:** Balardong Noongar

**Region:** Wheatbelt, WA

**Size:** 40 hectares

This site is a biodiverse sandalwood site located on a farm that has experienced severe weather damage. The site preparation will take place at the beginning of June, with 20,000 *Acacia acuminata* and accompanying 6kg of biodiverse seed mix to be planted in early July.



## COMMUNITY PLANTING

### NARROGIN -SUPPORTING ACTIVATE THE WHEATBELT

This winter we are supporting Activate the Wheatbelt with 40,000 trees for a community planting event at Narrogin in the WA Wheatbelt.

The planting will take place in June and is a fantastic opportunity to take part in restoring degraded land in the wheatbelt through revegetation.



## COMMUNITY PLANTING

### GREAT VICTORIAN DESERT - SUPPORTING TJUNTJUNTJARA COMMUNITY - ANANGU PEOPLE

This winter we are supporting the Tjuntjuntjara community with 2,000 trees. These trees will provide an amenity for the area, alongside a small native sandalwood plantation.

We are excited to tell you more about this project over the coming months.







### ADDRESS

Unit 11, 2 Dehli Street  
West Perth, WA, 6005

### PHONE NUMBER

1300 857 970

### EMAIL ADDRESS

[community@carbonpositiveaustralia.org.au](mailto:community@carbonpositiveaustralia.org.au)

### WEBSITE

[www.carbonpositiveaustralia.org.au](http://www.carbonpositiveaustralia.org.au)